

EVO Cam II (Full HD)



The **digital microscope** impresses with its high optical performance: objects are automatically focused and displayed with **high depth of field** on the monitor. **Modern digital technology** delivers fast and **reliable results** for **component or object testing** in the fields of electronics, automotive, precision mechanics, medical technology, plastics and many more.

Individually configurable

The EVO Cam II digital microscope can be configured for a wide range of **applications** in the **production environment** as well as in the **laboratory and QA**. Flexible design of the operating distance, large field of view, different tripod variants, lenses, polarisation filters, illumination and a sliding table provide a suitable user-specific solution.

Automated operation

For quick visual assessment

- **Create profiles** for camera settings
- Display **overlays, scalable grids, virtual calipers** and **comparison images**

For reproducible evaluations with the **dhs software**

- **Save system and measurement parameters**
- **Create templates** for professional reporting and documentation of results



Information at a glance

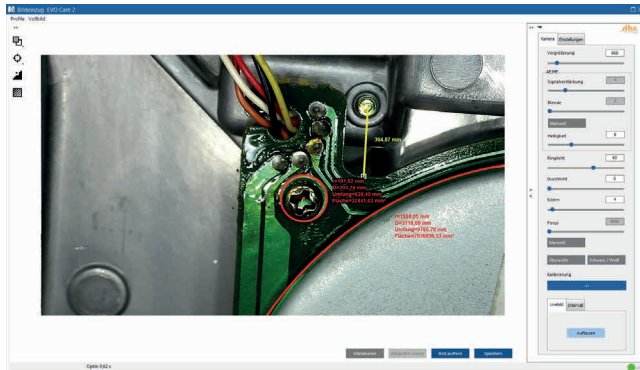
- Optical magnification 1.7x - 300x ; Max. Magnification with digital zoom 3600x
- Clear images without motion blur
- Large field of view, flexible operating distance
- Optical equipment individually configurable, e.g. with 360° angle lens
- Fast image transfer with WiFi and USB 3.0
- Automated operation through camera presets
- Connection to dhs software for professional image processing and analysis for reproducible results
- Convenient and time-saving reporting with the dhs software

Suitable software

With the appropriate dhs software, you also gain the advantage of **processing** the captured images **digitally**, **analysing** them or integrating them into **professional reports**. Many **convenient measurement functions** are integrated in the dhs-Basic combination package. The dhs software is modularly expandable, e.g. for the determination of grain sizes, areas, pores and much more.

dhs Image Acquisition Module for EVO Cam II special features

- Interval shooting
- Reticule
- Image comparisons on top of each other in the live image
- Shading, artifact filter
- Enlargement can be controlled via direct input of values
- Show annotations in live image



360° angle optics

The lens attachment allows an all-round view of the object without moving it. Hidden details on vertical objects are thus clearly visible.

Further precision and wide field lenses can be configured depending on the application.



Technical data EVO Cam II

Sensor	1/2.8"; CMOS; 16:9
Zoom	30 x optical; 12 x digital
Resolution (hvxv)	1920 x 1080 pixels
Resolution category	2K Full HD
Max. frame rate	50 fps/ 60 fps switchable

Data transmission:

- Direct (USB stick)
- Per cable (HDMI) o.a.
- On PC, mobile device
- Wireless (WiFi adapter)

Accessories

- Remote control (3 camera profiles quickly accessible)
- Polarising filters
- Sliding table
- Further tripod variants



Lighting options

- LED ring light
- Ultraviolet light
- Transmitted light

dhs Dietermann & Heuser Solution GmbH

Herborner Str. 50
35753 Greifenstein-Beilstein
GERMANY

Telefon: +49 (0)2779 9120-0

Fax: +49 (0)2779 9120-99

E-mail: vertrieb@dhssolution.com

Homepage: www.dhssolution.com

dhs
Image Data Base

dhs[®]
Micro Cam

dhs
Cleanalyzer

dhs Image Data Base, dhs-MicroCam[®] and dhs-Cleanalyzer are trademarks of dhs Dietermann & Heuser Solution GmbH. All technical data and information in this brochure are correct at the time of going to press (12-2019). Errors and omissions excepted. Subject to change.