

New solutions in 2020



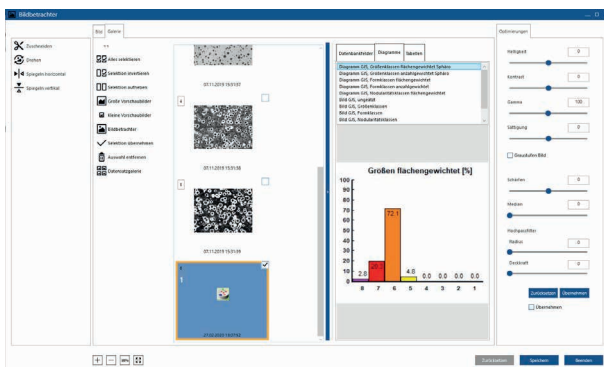
dhs-Modul Data Base:

Image viewer integrated

- launches by double clicking from the data-base object window
- **for optimising images** recorded previously (colour, contrast, crop, mirror, rotate, grey scale etc.)
- with **integrated scroll function** (saves time during image selection)
- with **gallery function:** for quick overview and image selection (incl. display of all data records belonging to the image)

Performance

- Data processing speed in network operation enormously increased



dhs-Modul Report:

functionally extended

- Image selection for report directly from the module via gallery function
- „Report fast“- directly after image selection
- „Cover page function“- combine several pages to a complete report; page numbers are generated automatically
- Search and sort function integrated
- Continuous image numbering of the selected images

dhs-Modul Depth of field:

modified and optimized

- integrated gallery function for image selection
- new calculation routines
- rework relevant image areas (ROI), including Preview
- calibration assignment in result image

dhs-Modul Weld Seam:

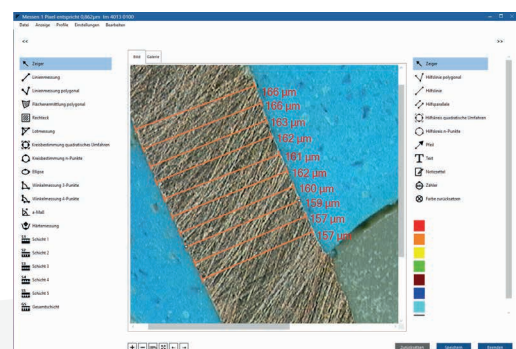
Auxiliary function integrated

- rotate measurement
- hide measured values

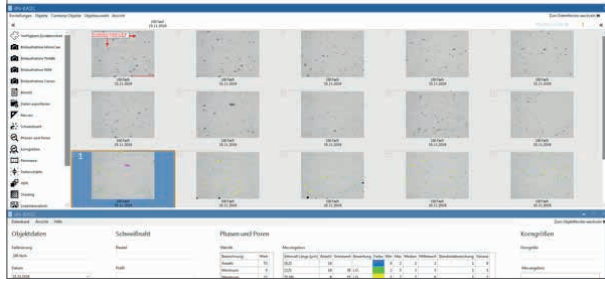
dhs-Modul Measurement:

functionally extended

- integrated gallery function and scroll function for image selection
- includes design throat thickness for weld seam measurements & simple coating thickness measurements
- grid display
- correct measurements by “catching” the start and end points of existing measurements
- specifically define which measurement readings are transmitted to the database or report
- comprehensive display of measurement lines and labels for each measurement type



dhs-Basic



Combi package:

NEW: Start the dongle and get started!

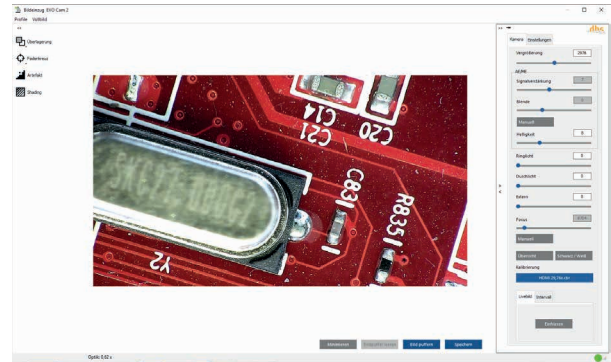
- Licensing via software dongle for easy installation on one workstation
- Installation is largely automated from
- 3 dongle packages are available for initial licensing: Basic functions database, image capture and measurement are included in all combinations; depending on the application focus, these are supplemented by the modules report, depth of field or panorama. Extensions and updates are possible at any time.

dhs-Basic is based on the dhs Image Database
- all new module features 2020 are also included in our software combination package!

Inspection without eyepieces with EVO Cam II:

dhs-Software + EVO Cam II =
perfect detail in double-quick time!

dhs-Modul Capture Images EVO Cam II:



- Additional menu for camera control settings via the monitor
 - enlargement via direct input of values
 - lamp & lighting type
- Shading, artefact filter, crosshairs, overlay
- all settings and parameters can be saved in profiles for reproduction
- Complete reporting with the dhs software

EVO Cam II digital microscope full HD

- Rapid image transfer (50/60 fps options)
- Optical zoom up to 300x; digital zoom up to 3600x
- Clear images without motion blur
- 360° wide-angle lens (as attachable lens) for 360° capture of vertical objects.



dhs Dietermann & Heuser Solution GmbH

Herborner Str. 50
35753 Greifenstein-Beilstein
GERMANY

Phone: +49 (0) 27 79 91 20-0
Fax: +49 (0) 27 79 91 20-99
E-Mail: sales@dhssolution.com
Internet: www.dhssolution.com

dhs
Image Data Base

dhs
Micro Cam

dhs
Cleanalyzer

dhs Image Data Base®, dhs MicroCam® and dhs Cleanalyzer® are trademarks of dhs Dietermann & Heuser Solution GmbH. All technical data and information in this data sheet correspond to the status at the time of printing (05/2020). Errors and changes reserved.