

dhs-Basic



With dhs-Basic, we offer an affordable **software solution** to **capture images** for individual workstations and to **measure** them. Additional **dhs tools** can be **added** to dhs Basic as a way of optimising images, comparing them, creating special metallographic analyses, transporting data and generating reports. Usage areas include industry, QA, labs, research and teaching. dhs Basic is completely **independent of specific interfaces** in terms of the available hardware. Operation is self-explanatory, clearly arranged and intuitive. The software can be installed **quickly and easily**.

Image capturing

- dhs Basic manages **all image sources**, including dhs-MicroCam, and image sources with Twain drives installed on computers, REM
- **Large, fast live image** on the monitor
- Comprehensive automated functions and setting options directly in the live image, including white balance, exposure time
- Clearly structured user menu

Image measurement

- Two-dimensional **measurement and labelling** of stored images
- Creation of **overlays**, e.g. for subsequent **insertion into a live camera image**
- **Measuring functions:** Including line, area, circular, angle and drop perpendicular
- **Help functions:**
Scale bars, zoom, creation and display of rulers, number of objects, insertion of arrows, texts, guides

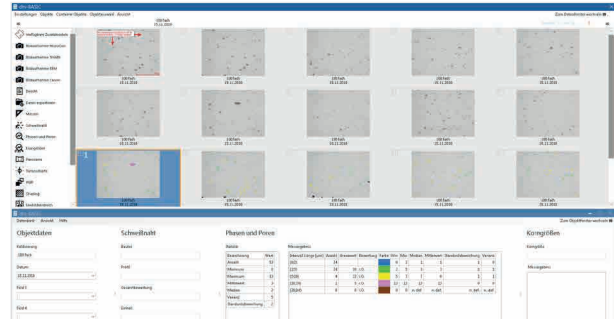


Image management / storage

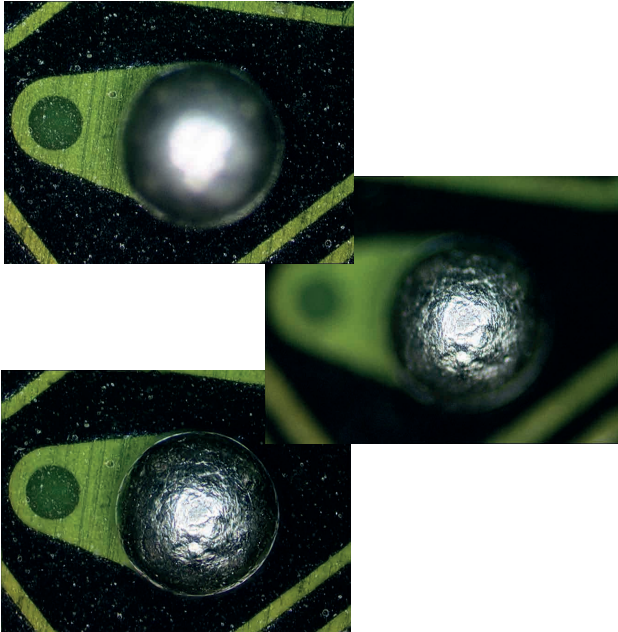
- Up to **300 images** possible in the image buffer, incl. **five data fields** for subsequent report preparation

Information at a glance

- Software solution to **capture and measure images**
- **Modular, expandable functionality**
– depending on application
- **Intuitive and clearly structured operation**
- **Open selection of image source and optical system**
- Updating capability with the dhs Image Database
- **Comprehensive measurement functions**
- **Automatic functions for image capture**
- **Simple installation**

Expansion with the dhs portfolio:

For sophisticated and powerful image evaluation, it is often necessary to **post-process** or **improve the raw image material**. For example, when blurring is caused by elongation of samples in the Z-axis, when capturing images at a high magnification and/or smaller aperture settings.

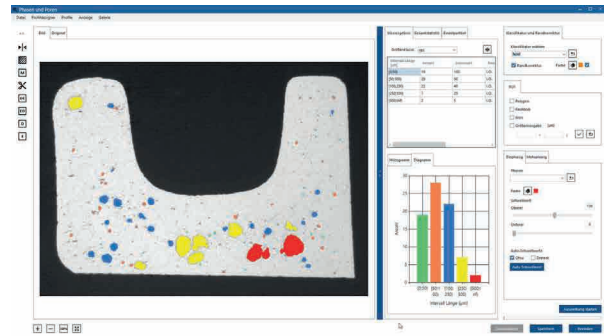


The software modul **depth of field** uses the image elements of varying sharpness from multiple focal levels to calculate a completely focused resulting image, which can be further processed.

The following modules are also available:

- **Panoramic image** (combining several images in X- and Y-axes)
- **Weld seam** (evaluation of weld seam during the manufacturing)
- **Metal sections** (comparing materialographic standard images)
- **HDR** (optimising the lightning)

Furthermore the dhs modules can be used for the following **tasks in image analysis**: Determine and classification of pores, phases and surfaces, as well as the grain sizes (of pearlite and ferrite structures).



Documentation

All previously determined images, texts, tables and results can be compiled in a report.

Available services

- Updating capability on the dhs Image Database for comprehensive data management, archiving for easy data management
- Online support
- Service agreement (support service and free updates)

dhs Dietermann & Heuser Solution GmbH

Herborner Str. 50
35753 Greifenstein-Beilstein
GERMANY

Telephone: +49 (0)27 79 91 20-0
Fax: +49 (0)27 79 91 20-99
E-mail: vertrieb@dhssolution.com
Internet: www.dhssolution.com

dhs
Image Data Base

dhs
Micro Cam

dhs
Cleanalyzer

dhs Image Database, dhs-MicroCam® and dhs-Cleanalyzer® are trademarks of dhs Dietermann & Heuser Solution GmbH. All technical data and information in this data sheet were correct at the time of publication (07/2019). Errors and omissions excepted. Information subject to change.