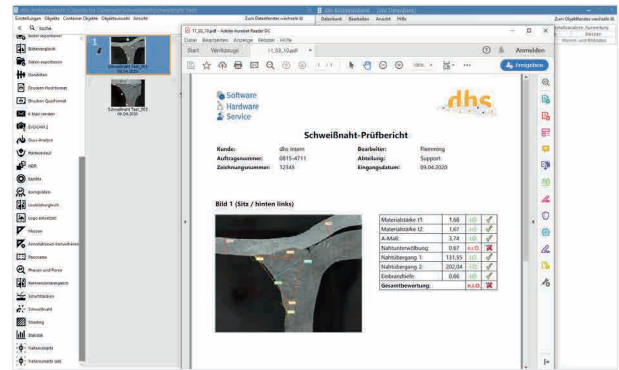
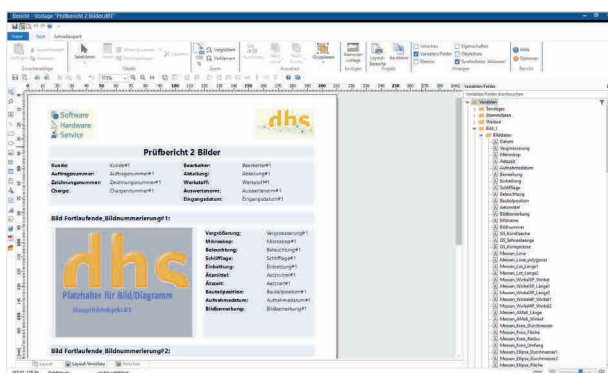


Report

This expansion module is the ideal tool for professional documentation of your work with the dhs software. All images, texts, tables and analysis results previously identified in the application, can be compiled and output as a test report. dhs' own report generator is MS Word-independent, in other words, there is no need to purchase additional Office programmes (dot templates with WORD continue to be supported)!

Creating document template

To automatically produce a test report and thus save time, a document template is created once beforehand for each project. The first step is to define the number of pages and images in the report. The template is created intuitively using the template designer. Using drag & drop, all the necessary fields and object placeholders for company logos, headers, images, tables and text blocks can be inserted directly into the layout view via the variable field. The layout view is framed with rulers and the coordinates of the objects inserted are shown. A wide range of formats for texts and the layout of the objects to be inserted can be selected using a tool bar. The created template can be saved in profiles.



Information in the overview

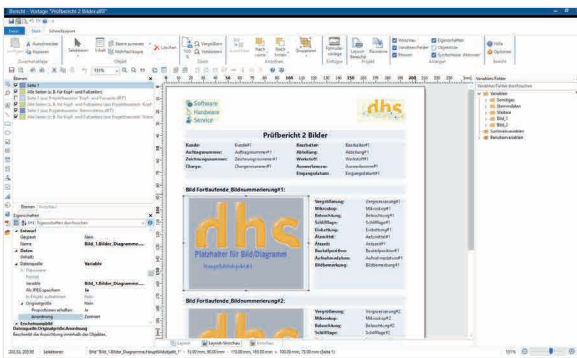
- Time-saving automatic transfer of all image data base content to your documents
- dhs' own report generator is independent of MS Word
- dot templates with WORD continue to be supported
- No need to purchase additional Office programs
- Templates and forms created in next to no time using the template designer
- Settings can be saved in profiles and accessed with a click of the mouse
- Barcodes can be generated
- Cover page function
- "Report fast"
- Image selection directly in the module via gallery function
- Search and scroll function for image- and data selection
- consecutive image numbering

Inserting objects

A document template is selected. The images, tables, etc. to be inserted are selected via the object window and inserted where the field was previously marked in the layout template. If required, **barcodes** can also be generated and inserted. All **objects can be subsequently edited**: arranged, aligned, copied, grouped or cut.

Specifying levels for objects

The level window allows you to conveniently **edit reports with several pages**. Selected objects can be assigned to different display levels and shown or hidden as necessary.

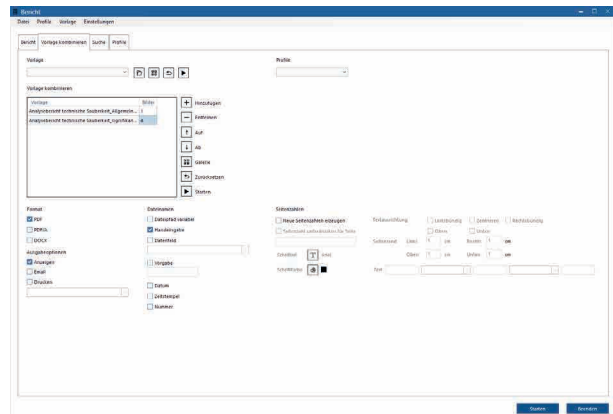


Processing reports

The finished report is shown via the preview. A number of options are available for further processing: saving the report, printing it or sending it directly via e-mail. Popular file formats such as MS Word, Excel and PDF are supported for the saving and sending options.

Comfortable features:

- Cover page funktion:
combine several pages to a complete report; page numbers are generated automatically
- „Report fast“: Start of report creation directly after image selection (if a template has already been defined)
- Image selection directly in the module via gallery function
- Search and scroll function for image selection
- Consecutive image numbering
- clear preselection by tabs
 - + simple report
 - + report composed of several templates
 - + advance search (to select specific data for the report)
- Path selection also possible via UNC network paths and IP addresses



dhs Dietermann & Heuser Solution GmbH

Herborner Str. 50
35753 Greifenstein-Beilstein
GERMANY

Phone: +49 (0)27 79 91 20-0
Fax: +49 (0)27 79 91 20-99
Email: vertrieb@dhsolution.com
Web: www.dhsolution.com

dhs
Image Data Base

dhs
Micro Cam

dhs
Cleanalyzer

dhs Image Data Base, dhs-MicroCam® and dhs-Cleanalyzer are trademarks of dhs Dietermann & Heuser Solution GmbH. All technical data and information in this brochure are correct at the time of going to press (07-2020). Errors and omissions excepted. Subject to change.